

# Saving Time & Money with the BigBelly System

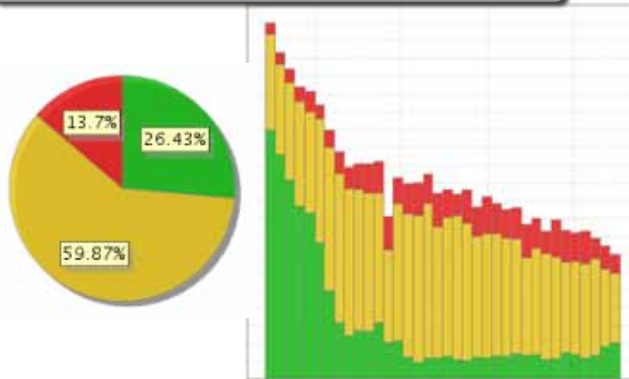
## Using Real-Time Data

Every component of the BigBelly Solar Intelligent Waste & Recycling System provides sensing and real-time reporting on its current fullness status. This information can be used to dispatch collection crews or re-route staff in the field based on actual need. Address hot spots before they become problem areas and avoid wasting time on unnecessary trips and stops to far-flung locations.



*Avoiding wasted resources*

## Optimizing Collection Frequency

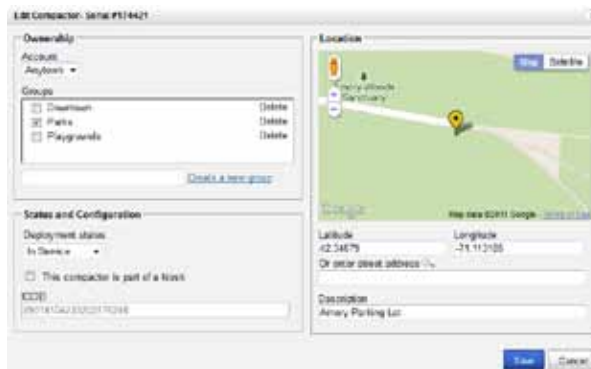


By only collecting waste and recycling from each location when it is ready to be emptied, operations can be streamlined and unnecessary fuel and labor usage reallocated. Historical analysis across the entire deployment clearly illustrates how total collections are reduced when staff only collects locations that are "yellow" or "red".

*Data-driven insights*

## Flexible Management

Robust inventory management tools make it easy to segment different locations into routes or groups to match collection personnel and tasks. Use these groups to create collection schedules and conduct route-specific analysis. Drag-and-drop placement lets you precisely place your stations on the map and keep your data current and accurate.



*Simplified asset management*

BigBelly Solar, Inc.  
85 Wells Avenue, Suite 305  
Newton, MA 02459 USA

**BigBelly**  
**SOLAR**  
Sales@BigBellySolar.com  
BigBellySolar.com

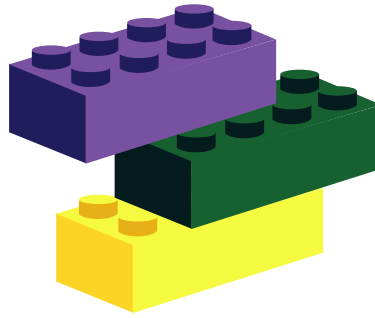
Toll-free: +1-888-820-0300  
Int'l: +1-781-444-6002  
Fax: +1-617-558-1010

*Smart Grid for Waste & Recycling™*

# A Solution for Every Corner

## Match Capacity to Demand

Waste and recycling stations can be configured to match the needs of any location with a host of compacting and non-compacting components. Trash, recycling and organics collection can be tailored to the specific volumes and mix of the waste streams of each site – all connected to the CLEAN management console for remote monitoring, reporting and management.



*Mix & match components*

## On-Site Compaction

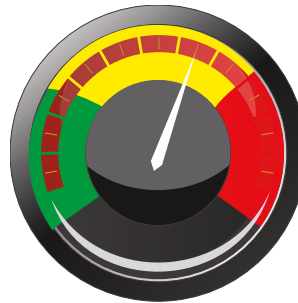


In locations that see heavy pedestrian traffic and large waste and recycling volumes, BigBelly Solar compactor solutions provide extra capacity in the same footprint of a traditional bin. With options for trash and single-stream recycling, high-traffic areas can realize the benefits of 5X compaction and an enclosed design that eliminates overflows and keeps out foraging animals.

*Rest assured with added capacity*

## Intelligent Monitoring for Every Location

Whether it is a far-flung location or a less-trafficked part of downtown, the SmartBelly empowers collection staff with the knowledge and confidence to adequately service every location without wasting time and fuel on unnecessary trips. With the SmartBelly, real-time views into the status of every waste and recycling station has become a reality.



*Visibility across the network*

## Community Engagement



BigBelly Solar waste and recycling stations are an excellent platform for communicating with residents and visitors about your sustainability initiatives and increase civic pride and engagement. Swappable messaging panels – as well as factory-made wraps – are an excellent way to make your community stand out.

*Unique visual identity*